

## EUROPEAN STANDARD FLANGE

FLANGE-EN1092-1:2007



Standard: EN1092-1:2007

Flange type: 01 PLATE; 02 & 04 LOOSE PLATE; 05 BLIND;  
11 & 35 WELDING NECK; 12 HUBBED SLIP ON;  
13 HUBBED THREADED; 32 PLATE COLLAR;  
34 WELD-NECK COLLAR;

Size range: DN15-DN3000

Pressure: PN6; PN10; PN16; PN25; PN40; PN63;  
PN100; PN160; PN250

Material: Carbon steel P235GH; P245GH; P250GH; P265GH; P280GH;  
Stainless steel ASTM A182 F304/304L; F316/316L; F321; F51



## GERMAN STANDARD FLANGE

FLANGE-DIN



Standard: DIN

Flange type: PLATE 2573/2576/2502/2503; BLIND 2527  
WELDING NECK 2631/2632/2633/2634/2635/2636/2637;  
LAPPED 2641/2642/2655/2656  
THREADED 2565/2566/2567/2568  
HUBBED SLIP ON 86029/86030

Size range: DN10-DN3000

Pressure: PN6; PN10; PN16; PN25; PN40; PN64; PN100; PN160

Material: Carbon steel ST37.2; S235JR; C22.8;  
Stainless steel ASTM A182 F304/304L; F316/316L; F321; F51





## AMERICAN STANDARD FLANGE

### FLANGE-ANSI B16.5



Standard: ANSI B16.5

Flange type: WELDING NECK; SLIP ON; BLIND; LAP JOINT;  
THREADED; SOCKET WELDING

Size range: 1/2" to 24"

Pressure class: 150LB; 300LB; 400LB; 600LB; 900LB; 1500LB; 2500LB

Sealing type: Flat face (FF); Raised face (RF); Ring Joint (RTJ)

Material: Carbon steel ASTM A105/A105N; A694 F42-F70; A-350 LF1/LF2;  
Stainless steel ASTM A182 F304/304L; F316/316L; F321; F51  
Alloy steel ASTM A182 F11/F12/F22



## AMERICAN STANDARD FLANGE

### FLANGE-ASME B16.47 SERIES A (MSS SP44)



Standard: ASME B16.47 SER.A (MSS SP44)

Flange type: WELDING NECK; BLIND

Pressure class: 150LB; 300LB; 400LB; 600LB; 900LB

Size range: 12"-60"

Material: Carbon steel ASTM A105/A105N; A694 F42-F70;  
A-350 LF1/LF2;  
Stainless steel ASTM A182 F304/304L; F316/316L; F321

### FLANGE-ASME B16.47 SERIES B (API605)



Standard: ASME B16.47 SER.B (API 605)

Flange type: WELDING NECK; BLIND

Pressure class: 75LB; 150LB; 300LB; 400LB; 600LB; 900LB

Size range: 26"-60"

Material: Carbon steel ASTM A105/A105N; A694 F42-F70;  
A-350 LF1/LF2;  
Stainless steel ASTM A182 F304/304L; F316/316L; F321

### FLANGE-AWWA C207



Standard: AWWA C207

Flange type: RING FLANGE; BLIND FLANGE; HUB FLANGE

Pressure: CLASS B; CLASS D; CLASS E; CLASS F;

Size range: 4"-144"

Material: Carbon steel ASTM A36; A105  
Stainless steel ASTM A182 F304/304L; F316/316L; F321



## RUSSIAN STANDARD FLANGE

### FLANGE-GOST



Standard: GOST

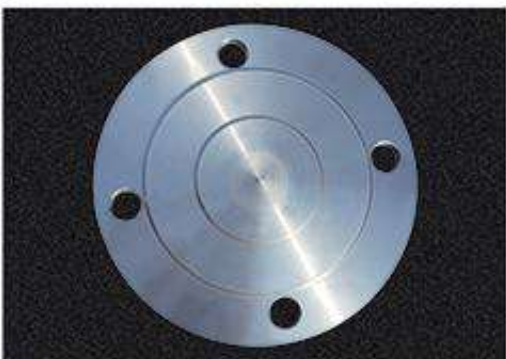
Flange type: PLATE 12820-80; WELDING NECK 12821-80;  
RING 12822-80; BLIND 12836-67

Size range: DN10-DN2000

Pressure: PN6; PN10; PN16; PN25; PN40; PN63; PN100; PN160; PN200

Material: Carbon steel CT20; CT.3

Stainless steel 12X18H10T; 10X17H13M2T  
Alloy steel 09T2C; 15X5M



## JAPANESE STANDARD FLANGE

### FLANGE-JIS B2220



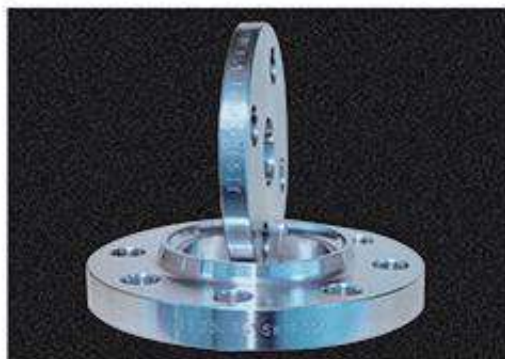
Standard: JIS B2220

Flange type: SOP; SOH; BLIND; WELDING NECK;  
SOCKET WELDING;

Size range: 10A-1500A

Pressure: 1K; 2K; 5K; 10K; 16K; 20K; 30K

Material: Carbon steel SS400; SF390A; SF440A  
Stainless steel SUS F304/F304L; F316/F316L  
Alloy steel SFVA F1; SFVA F1A





## BRITISH STANDARD FLANGE

### FLANGE-BS4504



Standard: BS4504

Flange type: 101 PLATE; 105 BLIND; 111 WELDING NECK;  
112 SLIP ON; 113 THREADED

Size range: DN10-DN2000

Pressure: PN6; PN10; PN16; PN25; PN40

Material: Carbon steel A105; C22.8; ST37.2; S235JR  
Stainless steel 304/304L; 316/316L; 321



### FLANGE-BS10



Standard: BS10

Flange type: PLATE; BLIND; SLIP ON; THREADED

Size range: DN15-DN600

Pressure: TABLE D/E/F/H

## ITALIAN STANDARD FLANGE

### FLANGE-UNI



Standard: UNI

Pressure: PN 6, PN10, PN16, PN25, PN40,  
PN64, PN100

Size: DN10-DN2000

Design: THREADED UNI 2253-67, 2254-67, 2255-67  
BLIND UNI 6091-67, 6092-67, 6093-67  
PLATE UNI 2276-67, 2277-67, 2278-67,  
6083-67, 6084-67  
WELDING NECK UNI 2280-67, 2281-67  
2282-67, 2283-67, 2284-67  
LAPPED UNI 6089-67, 6090-67

Material: Carbon steel A105; C22.8; ST37.2; S235JR; P245GH  
Stainless steel 304/304L; 316/316L; 321



## SOUTH AFRICAN STANDARD FLANGE



Standard: SABS 1123

Pressure: 600KPA, 1000, 1600, 2500, 4000

Size: DN10-DN600

Design: WELDING NECK TYPE2  
PLATE TYPE3  
SLIP ON TYPE 4  
BLIND TYPE 8

## AMERICAN STANDARD PIPE FITTING

### BUTT-WELDING PIPE FITTING ANSI B16.9



Standard: ANSI/ASME B16.9

Product: Elbow LR/SR, 45/90/180DEG,  
Tee Straight/Reducing; Cross  
Reducer Concentric/Eccentric  
Cap

Size: 1/2"-24"Seamless  
4"-72" Seam-welded

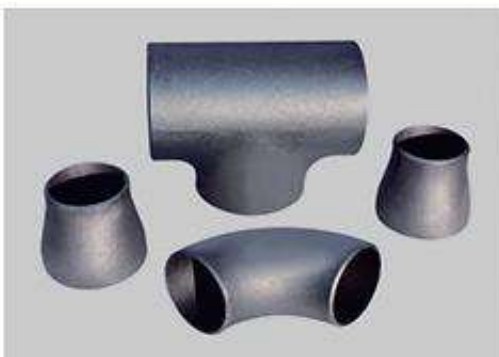
Wall thickness: SCH5, SCH10S, SCH10, SCH20, SCH30,  
STD, SCH40, XS, SCH60, SCH80, SCH100,  
SCH120, SCH140, SCH160, XXS

Material: Carbon steel ASTM A234 WPB  
Stainless steel A403 WP304/304L;  
WP316/316L; WP317/317L; WP321



## GERMAN STANDARD PIPE FITTING

### BUTT-WEDLING PIPE FITTING DIN260-2617



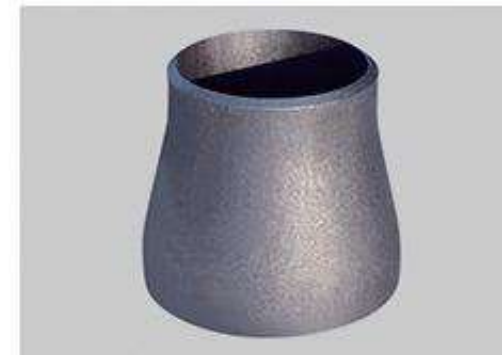
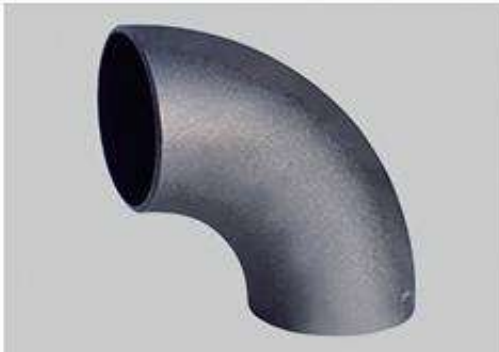
Standard: DIN2605,2615,2616,2617

Product: DIN2605 Elbow 2D/3D/5D, 45/90/180DEG,  
DIN2615 Tee Straight/Reducing  
Din2616 Reducer Concentric/Eccentric  
DIN2617 Cap

Size: 1/2"-24"Seamless  
4"-72"Seam-welded

Wall thickness: 2mm-25mm

Material: Carbon steel ST35.8; P265GH  
Stainless steel 1.4301(304); 1.4306(304L);  
1.4436(316); 1.4435(316L); 1.4541(321)





## JAPANESE STANDARD PIPE FITTING

### BUTT-WEDLING PIPE FITTING JIS B2311



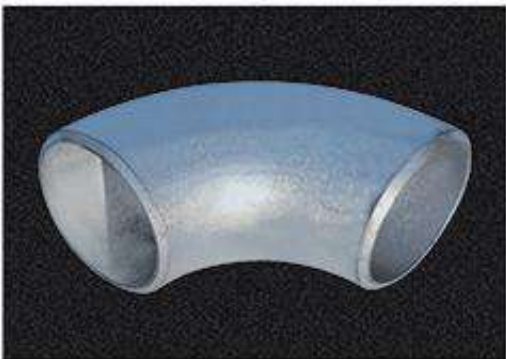
Standard: JIS B 2311

Product: Elbow LR/SR, 45/90/180DEG,  
Tee Straight/Reducing  
Reducer Concentric/Eccentric  
Cap, Cross

Wall thickness: SGP

Size: 1/2"-24"Seamless  
4"-72"Seam-welded

Material: Carbon steel JIS G 3452; SS400  
Stainless steel SUS304/304L; SUS316/316L;  
SUS321



## RUSSIAN STANDARD PIPE FITTING

### BUTT-WEDLING PIPE FITTING GOST



Standard: GOST17375, 17376, 17377, 17378

Product: Elbow LR/SR, 45/90/180DEG,  
Tee Straight/ Reducing  
Reducer Concentric/Eccentric  
Cap, Cross

Wall thickness: 2mm-25mm

Size: 1/2"-24"Seamless  
4"-72"Seam-welded

Material: Carbon steel CT.20; 09T2C;  
Stainless steel 08X18H10; 03X18H11; 12X18H10T;  
10X17H13M; 10X17H13M2T





## STAINLESS STEEL THREADED CONNECTION FITTINGS



**Products:** ELBOW 90°/45°; REDUCING ELBOW; SOCKET ELBOW;  
TEE; REDUCING TEE; CROSS;  
NIPPLE; HEX NIPPLE; HALF NIPPLE;  
BARREL NIPPLE; HOUSE NIPPLE;  
SOCKET BANDED; REDUCING SOCKET BANDED;  
CONICAL UNION; UNION(MALE/FAMALE);  
PLUT; HEX PLUG; COUPLING; BUSHING; CAP

**Size range:** 1/4"-4"

**Material:** Stainless steel 304; 316



## FORGED FITTINGS ASME B16.11 SOCKET WELDING AND THREADED



**Standard:** ASME B16.11

**Products:** ELBOW; TEE; COUPLING; HALF COUPLING;  
CAP; PLUG; BUSHING; UNION; OUT-LET;  
SWAGE NIPPLE; BULL PLUG  
REDUCER INSERT; HEX NIPPLE; STREE ELBOW;  
BOSS

**Size range:** 1/8"-4"

**Pressure class:** THREADED END 2000LB/3000LB/6000LB  
SOCKET-WELD END 3000LB/6000LB/9000LB  
BUTT WELD END SCH40/SCH80/SCH160/XXS

**Material:** Carbon steel ASTM A105; A350 LF2; A106; A234  
Stainless steel ASTM A182 F304/304L; F316/316L; F321

