



ASIA DUCTILE
 亚洲铸铁



STAINLESS STEEL REPAIR CLAMPS



AS-1

One band clamp

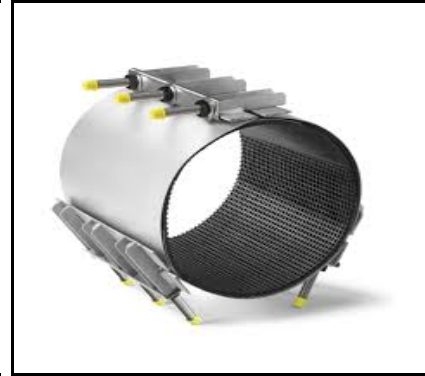
Available for pipe O.D. 48mm
 Up to pipe O.D. 366mm



AS-2

Two band clamp

Available for pipe O.D. 88mm
 Up to pipe O.D. 610mm



AS-3

Three band clamp

Available for pipe O.D. 273mm
 Up to pipe O.D. 950mm

(AS-4 & AS-5 are available for larger pipe O.D.)

Material:

Clamp	Stainless Steel AISI 304 or 316
Rubber	EPDM or NBR
Bolts Nuts & Washer	Stainless Steel A4

Full Seal Stainless Steel Repair Clamps

Full seal provides an economical repair for circumferential breaks or cracks, multiple leaks or holes in pipes. They are available in standard lengths for cast and ductile iron, standard steel, PVC, and A-C. Each clamp size can accommodate a wide range of O.D. variations.

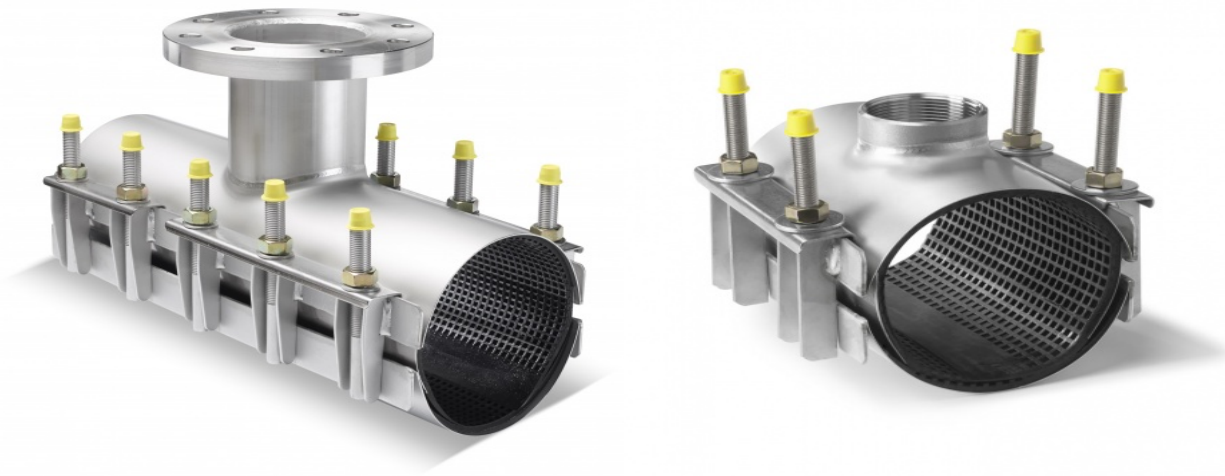
ASIA Repair Clamp Sealing Range

AS-1 Range/mm		AS-2 Range/mm		AS-3 Range/mm	
48-52	118-128	190-210	382-402	273-303	575-605
54-58	120-131	195-217	396-420	295-325	590-620
60-67	125-135	210-230	410-430	315-335	615-645
67-74	132-142	216-238	420-440	330-360	630-660
70-77	135-145	225-246	435-455	355-385	650-680
73-80	145-155	230-250	450-470	380-410	670-700
76-83	151-161	240-260	468-488	400-430	720-750
82-89	159-170	250-270	485-505	420-450	770-800
87-94	165-175	269-289	490-510	440-470	790-820
91-96	167-177	273-293	500-520	465-495	820-850
95-102	170-180	282-302	510-530	485-515	835-865
98-108	174-184	295-315	516-536	510-540	860-890
102-112	176-186	315-335	520-540	530-560	890-920
106-116	180-190	322-344	532-552	550-580	920-950
108-118	186-196	337-358	550-570		
113-123	196-203	347-367	570-590		
		365-385	590-610		



ASIA DUCTILE
亚洲铸铁

STAINLESS STEEL SPLIT TEE



ASIA SST is made from two band clamps with flange outlet (up to DN400) or a threaded (up to 4"). The upper body is reinforced to accommodate the installation of valve etc. Lightweight for easy installation. Full circle construction for optimal pipe support.

MATERIALS

1. Metal parts: All metal parts of ASIA split tee are made of stainless steel AISI 304 or AISI 316.
2. Bolts & Nuts: M12, M14 or M16 depending on the diameter
3. Gasket: The tapered gasket has a waffle pattern and the bridge plate is vulcanised into the gasket for high sealing performance. SBR, NBR, EPDM gaskets according to various standards are available. The gaskets are suitable for water, gas, various chemicals and temperatures up to 140°C.

PIPE SIZE	PIPE OD RANGE	FLANGE PN 10/16	LENGTH
100mm	114-134mm	100mm	400mm
150mm	159-180mm	100mm/150mm	400mm
200mm	216-238mm	100mm/150mm	400mm
200mm	216-238mm	200mm	500mm
300mm	314-334mm	100mm/150mm	400mm
300mm	314-334mm	200mm	500mm
300mm	314-334mm	300mm	600mm
450mm	468-488mm	100mm/150mm/200mm	500mm
450mm	468-488mm	300mm	600mm
450mm	468-488mm	400mm	1000mm
500mm	514-534mm	100mm/150mm/200mm	500mm
500mm	514-534mm	300mm	600mm
500mm	514-534mm	400mm	1000mm
600mm	608-638mm	100mm/150mm/200mm	600mm
600mm	608-638mm	300mm/400mm	1000mm

Other sizes and ranges are available upon request.